



## **Plustek SmartOffice PS406U**

Easy- to-use Scanner Fits Just About Anywhere  
Quick, Portable, Easy Document & Plastic Card Scanning

### **Discover a new level of front-office productivity**

Enhanced with innovative features, the *SmartOffice PS406U scanner* offers outstanding price/performance value in a compact footprint, conserving both space and budget. You get fast scanning speeds, a high daily duty cycle, robust paper handling capabilities, and an ultrasonic double-feed detection feature, all from a compact, desktop scanner. The *SmartOffice PS406U* offers businesses a powerful scanning solution, featuring speeds up to 80 images per minute and a duty cycle of up to 4000 sheets. This high-volume, sheet-fed scanner makes it easy to capture all your critical documents. And, it offers an amazing value with fast speeds, a 100-page feeder and incredible versatility.

### **Features exceptional feeding reliability**

Engineered with one of the most advanced paper separation features in their class, the *SmartOffice PS406U* is the first workgroup scanner in exceptional feeding reliability for an even wider variety of document weights. The *SmartOffice PS406U* also delivers uncompromised high-resolution performance of up to 20 pages per minute and 40 images per minute

in color at an astounding 300 dpi. Able to handle everything from business cards to rigid ID cards and documents, the *SmartOffice PS406U* easily scans both sides of one sheet in just one pass. And, it does so in color, grayscale or bi-tonal. It's never been easier to electronically capture critical documents.

### **Save time with One-Touch scan to Searchable PDF**

The *SmartOffice PS406U* workgroup scanner conveniently includes everything in the box to get organizations up and scanning. With the Plustek DocAction, Plustek DI Capture, OCR and BCR software, users get image enhancement functionality as well as the option of scanning directly to Searchable PDF file, print or batch. Whether you need a faster way to access shared documents, a more affordable way to comply with government mandates or a better way to maintain the integrity of important documents, the *SmartOffice PS406U* is the perfect place to start. Furthermore, the automatic document feeder (ADF) is also robust enough to feed up to three hard cards continuously or an embossed card up to 1.2 mm in thickness.

# Plustek SmartOffice PS406U

Discover a new level of front-office productivity  
Bring Digital Documents to Your Workgroups

The SmartOffice PS406U document scanner makes document warehousing a simple task, with high-speed scanning at the touch of a button. 40 pages per minute and 80 images per minute, newly customised High Speed TWAIN drivers, a 100-page duplexing ADF make this the first choice for document processing. It supports most major scanning environments. Alongside its Plustek DocTwain driver, it offers users more flexibility and supports Auto Document Sizing. This contributes to faster scanning speed and greater productivity, and can be used for batch scanning with the ADF. Without this function, it is necessary to spend time manually entering the paper size during their pre-scan. Thanks to Auto Document Sizing, this time is now saved.

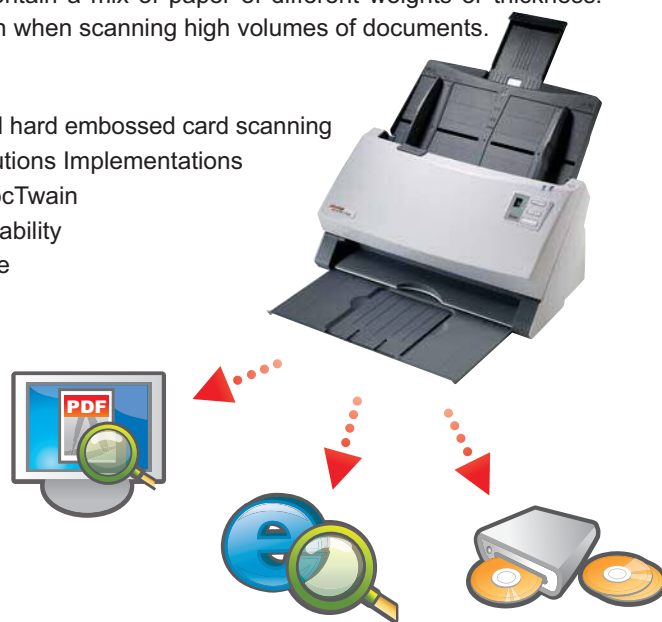
Additionally, the SmartOffice PS406U has the efficiency of Intelligent MultiFeed Function that is enhanced by an ultrasonic sensor that detects the double feeding of originals during scanning. The intentional double-feeds, such as a taped receipt or sticky note, can be easily scanned while the function is disabled. This innovative design prevents double feeding, and has been proven effective even when the documents being scanned contain a mix of paper of different weights or thickness. Thanks to double-feed prevention, optimum reliability is assured even when scanning high volumes of documents.

## Key Features

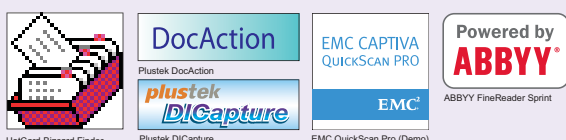
- Robust 100-page Automatic Document Feeder (ADF) with enhanced hard embossed card scanning
- TWAIN and WIA Drivers – Allows Full Document Management Solutions Implementations
- Comes with Plustek DocAction, Plustek DI Capture and Plustek DocTwain
- Advanced paper handling technology for the ultimate in feeding reliability
- Fast, 40ppm / 80ipm scanning in Color, monochrome and grayscale
- Deskew using scanned image, Automatic Page Size Detection
- 3 colour dropout modes for advanced OCR processing
- Enhanced for the ultimate in performance and reliability
- Exceptional 300 dpi color scanning at 20ppm / 40ipm

## Software Solution

- Plustek DocAction
- Plustek DI Capture
- EMC QuickScan Pro (Demo)
- Hotcard Bizcard Finder
- ABBYY FineReader Sprint



## Software Bundled



## System Requirements

Pentium IV 2.0 GHz processor (Pentium IV 3.0 GHz processor recommended)  
CD-ROM Driver / One available USB Port (USB 2.0 recommended) / 1GB RAM or higher recommended / 800 MB free HDD space (1 GB or larger recommended) / High Color graphic card (VGA or higher) / Windows XP, 2000, Vista, 7

## Specification

Optical Resolution	600 dpi
Max. Hardware Resolution	600 x 600 dpi
Technology	CCD Sensor
ADF Capacity	100 sheets (A4/Letter, 70 g/m <sup>2</sup> or 18 Lbs) Note: Maximum ADF capacity varies, depending upon paper weight.
ADF Scanning Speed	40 ppm/80 ipm (200 dpi, color mode, A4 Portrait) 40 ppm/80 ipm (300 dpi, grayscale mode, A4 Portrait) 40 ppm/80 ipm (300 dpi, B/W mode, A4 Portrait) Note: Results may vary depending upon your scanning application, computer processor and system memory.
Scan Area(W x L)	Max. 216 x 356 mm (8.5" x 14") Min. 13.2 x 13.2 mm (0.52" x 0.52")
Acceptable Paper Sizes (W x L)	Max. 244 x 356 mm (9.6" x 14") Min. 50.8 x 50.8 mm (2" x 2")
Acceptable Paper Weight for ADF	40 to 220 g/m <sup>2</sup> (10 to 58 Lbs)
Daily Duty Scan (Sheets)	4000
Roller Lifetime (Scans)	300000 (Customer replaceable)
Pad Lifetime (Scans)	50000 (Customer replaceable)
Power Adapter	24Vdc, 1.25 A
Interface	USB 2.0 High Speed
4 buttons	Scan, PDF, File, Standby
Physical Dimensions(W x D x H)	318.7 x 230.7 x 228.3 mm(12.55" x 9.08" x 8.99")
Weight	2.7 Kg (5.95 Lbs)
Protocols	Compatible with ISIS & TWAIN

Headquarters: sales@plustek.com



As an international ENERGY STAR Partner, Plustek has determined that this product meets the international ENERGY STAR Program for energy efficiency.



© 2012 by Plustek Inc. All rights reserved.  
All registered trademarks are the property of their respective owners.

# Plustek PS456U

## ❖ SOFTWARE



Powered by  
**ABBYY®**

### ABBYY FineReader 9.0 Sprint

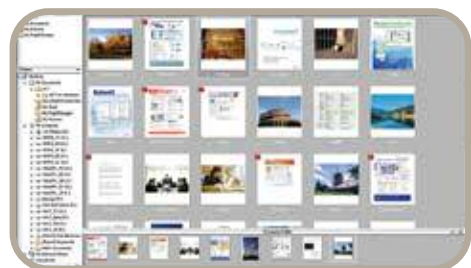
Unlocks the data inside paper-based documents, images and PDF files with enhanced accuracy that eliminates the need for retyping and reformatting. Tool that increases your productivity and efficiency which comes with simple user interface and supports recognition up to 183 languages.



### DocAction

#### Plustek DocAction

Button utility to simplify document scanning. DocAction enables you to specify your personalized scanning configuration settings and scan documents with the touch of a button. Scanned documents are automatically sent directly to Printer, Email, Folder or FTP. DocAction also enables you to scan directly to many imaging and document management applications. DocAction saves scanned documents in all common imaging formats including: JPEG, TIFF, and PDF.



### Presto! PageManager 9

#### NewSoft Presto! PageManager

Presto! PageManager 9 SE is an easy to use, front-end page client that provides for all your documents. Capabilities include Capture, Preview, Convert and Deliver all your paper and electronic documents to a designated location. You simply drag-&-drop to stack or merge files, or use the embedded OCR (Optical Character Recognition) feature to convert them to a searchable PDF. feature to convert them to a searchable PDF.

#### Hardware Requirements

Pentium IV 2.0 GHz processor (Pentium IV 3.0 GHz processor recommended)  
CD-ROM Driver  
One available USB Port (USB 2.0 recommended)  
1GB RAM or higher recommended  
800 MB free HDD space (1 GB or larger recommended)



#### Specification

Image Sensor	CCD Sensor x 2
Optical Resolution	600 dpi
Hardware Resolution	600 x 600 dpi
ADF Capacity	1. 100 sheets (A4/ Letter, 70 g/m <sup>2</sup> or 18 Lbs) 2. 30 sheets (Business Cards) 3. Plastic Card, Max. thickness under 1.2 mm. Note: Maximum ADF capacity varies, depending upon paper weight.
Scanning Speed ( ADF )	80 ppm/ 160 ipm (Grayscale/B&W mode, 300 dpi, A4 Portrait) 45 ppm/ 90 ipm (Color mode, 200 dpi, A4 Portrait) 30 ppm/ 60 ipm (Color mode, 300 dpi, A4 Portrait) Note: Results may vary depending upon your scanning application, computer processor and system memory.
Scanning Area (W x L)	Max: 216 x 2500 mm (8.5" x 98.42") Min: 13.2 x 13.2 mm (0.52" x 0.52")
Acceptable Paper Sizes (W x L)	Max: 244 x 2530 mm (9.6" x 99.60") Min: 50.8 x 50.8 mm (2" x 2")
Acceptable Paper Weight (Thickness)	40 to 220 g/m <sup>2</sup> (10 to 58 Lbs)
Daily Duty Scan ( Sheets )	8,000
Roller Lifetime (Scans)	300,000
Pad Lifetime (Scans)	50,000
Action Button	4 Buttons: Up, Down, Scan, Standby 9 Function Keys: Scan, PDF, OCR, File, E-Mail, Copy, BCR, FTP, DI Capture. All Customizable.
Power Supply	24 Vdc/ 1.25 A
Interface	USB 2.0
Net Weight	2.7 Kgs (5.95 Lbs)
Dimensions (W x D x H)	318.7 x 230.7 x 228.3 mm (12.55" x 9.08" x 8.99")
Protocol	ISIS & TWAIN Compliant
OS	Windows 2000 / XP / Vista / 7 / 8

# Plustek PS456U

**plustek**

SmartOffice Series

High speed, reliable,  
cost effective **departmental class**  
document scanner



The Plustek SmartOffice PS 456U is a 80 page per minute, duplex color document scanner that is not only fast, it's reliable and cost effective. Ultrasonic misfeed detection ensures all of your critical documents are imaged correctly. Robust paper handling, advanced image processing and a high daily duty cycle all add up to the perfect departmental scanning solution for document management, content management and forms processing applications.

## ❖ KEY FEATURES

- Scan speed up to 80ppm/160ipm
- 100 page ADF capacity and a generous daily duty cycle
- Improved high quality imaging and robust paper handling.
- Ultrasonic multi-feed detection
- No warm up time. Instant on LED illumination.
- New quiet operation
- Scans plastic cards, insurance cards, license cards, business cards up to 1.2mm
- Scans long documents up to 2500mm (98")
- Single touch scanning to popular formats including Searchable PDF, Word, Excel, JPEG and TIFF
- Automatic wake up when documents are placed in the feeder
- Advanced image enhancement to automatically straighten and rotate pages, adjust brightness, detect color and increase OCR accuracy.

# Plustek PS4080U

## ❖ SOFTWARE



Powered by  
**ABBYY®**

### ABBYY FineReader 12 Sprint

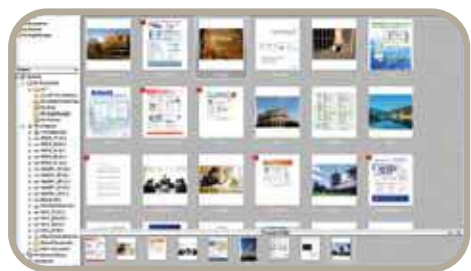
Unlocks the data inside paper-based documents, images and PDF files with enhanced accuracy that eliminates the need for retyping and reformatting. Tool that increases your productivity and efficiency which comes with simple user interface and supports recognition up to 183 languages.



**DocAction**

### Plustek DocAction

Button utility to simplify document scanning. DocAction enables you to specify your personalized scanning configuration settings and scan documents with the touch of a button. Scanned documents are automatically sent directly to Printer, Email, Folder or FTP. DocAction also enables you to scan directly to many imaging and document management applications. DocAction saves scanned documents in all common imaging formats including: JPEG, TIFF, and PDF.



**Presto! PageManager 9**

### NewSoft Presto! PageManager

Presto! PageManager 9 SE is an easy to use, front-end page client that provides for all your documents. Capabilities include Capture, Preview, Convert and Deliver all your paper and electronic documents to a designated location. You simply drag-&-drop to stack or merge files, or use the embedded OCR (Optical Character Recognition) feature to convert them to a searchable PDF.

#### Hardware Requirements

Pentium IV 2.0 GHz processor (Pentium IV 3.0 GHz processor recommended)  
CD-ROM Driver  
One available USB Port (USB 2.0 recommended)  
1GB RAM or higher recommended  
800 MB free HDD space (1 GB or larger recommended)



#### Specification

Image Sensor	CCD x 2
Optical Resolution	600 dpi
Optical Resolution	LED
Hardware Resolution	600 x 600 dpi
ADF Capacity	1. 100 sheets (A4/ Letter, 70 g/m <sup>2</sup> or 18 Lbs) 2. 30 sheets (Business Cards) 3. Plastic Card, Max. thickness under 1.2 mm. Note: Maximum ADF capacity varies, depending upon paper weight.
Scanning Speed ( ADF )	40 ppm/80 ipm (300 dpi, grayscale mode, A4 Portrait) 40 ppm/80 ipm (300 dpi, B&W mode, A4 Portrait) 40 ppm/80 ipm (200 dpi, color mode, A4 Portrait) 30 ppm/60 ipm (300 dpi, color mode, A4 Portrait) Note: Results may vary depending upon your scanning application, computer processor and system memory.
Scanning Area (W x L)	Max: 216 x 5080 mm (8.5" x 200") Min: 13.2 x 13.2 mm (0.52" x 0.52")
Acceptable Paper Sizes (W x L)	Max: 244 x 5080 mm (9.6" x 200") Min: 50.8 x 50.8 mm (2" x 2")
Acceptable Paper Weight (Thickness)	40 to 220 g/m <sup>2</sup> (10 to 58 Lbs)
Multi-feed Detection	With ultrasonic technology
Daily Duty Scan ( Sheets )	4,000
Roller Lifetime (Scans)	300,000
Pad Lifetime (Scans)	50,000
Action Button	4 Buttons: Up, Down, Scan, Standby 9 function keys are all customizable.
Power Supply	24 Vdc/ 1.25 A
Interface	USB 2.0
Net Weight	2.7 Kgs (5.95 Lbs)
Dimensions (W x D x H)	318.7 x 230.7 x 228.3 mm (12.55" x 9.08" x 8.99")
Protocol	TWAIN Compliant
OS	Windows XP / Vista / 7 / 8 / 10

# Plustek PS4080U

**plustek**

SmartOffice Series

**Fast scanning, best value,  
reliable and affordable  
document scanner**



The Plustek SmartOffice PS 4080U is a departmental class document scanner capable of simplex/duplex scan. With built-in auto-document feeder, it is extremely efficient in performing duplex scan for a stack of double-sided documents. In simplex scan mode the Plustek PS4080U scans up to 40 pages per minute, and in duplex mode, 80 images. The auto-document feeder has a cavernous capacity of 100 sheets. All these features make the Plustek PS4080U scanner an essential part of every digital office.

## ❖ KEY FEATURES

- **Ultrasonic multi-feed detection**
- **Scanning speed up to 40ppm/80ipm**
- **Hold up to 100 pages in auto document feeder**
- **A generous daily duty cycle up to 4000 pages**
- **Improved high quality imaging and robust paper handling**
- **No warm up time. Instant on LED illumination**
- **Scans plastic cards, insurance cards, license cards, business cards up to 1.2mm**
- **Scans long documents up to 200" (5080mm)**
- **Single touch scanning to popular formats including Searchable PDF, PDF/A, Word, Excel, JPEG and TIFF**
- **Automatic wake up when documents are placed in the feeder**
- **Automatically image cropping and straightening at full scanning speed**
- **Brightness and contrast controls to customize color output for specific applications**